

Deform-Nut® SERIE 9203 • 9203-Z

S E R I E S

THREADED TUBULAR RIVET NUTS WITH LOW PROFILE HEAD



Ref. UNI 9203 standard

APPLICATION
On boxed and tubular sections, metal sheets, other materials.
ASSEMBLY
By specific manual and pneumatic tools.

CODE		Grip range	Total lenght	Metrical thread	Shaft Ø	Head Ø	Head thicknesses	Hole Ø	Rear lenght
		(s)	(l)	(d1) 6H	(d)	(d3)	(l1) ~	(d5) +0,15 0	(l2) *
9203A/M 3/_	9203A/M 3/_Z_	0,5 ÷ 2,0	9	M 3	5	5,5	0,35	5	6
9203B/M 3/_	9203B/M 3/_Z_	2,0 ÷ 3,5	10,5						
9203A/M 4/_	9203A/M 4/_Z_	0,5 ÷ 2,0	10	M 4	6	6,75	0,5	6	6,5
9203B/M 4/_	9203B/M 4/_Z_	2,0 ÷ 4,0	12						
9203A/M 5/_	9203A/M 5/_Z_	0,5 ÷ 2,5	12	M 5	7	8	0,6	7	7
9203B/M 5/_	9203B/M 5/_Z_	2,5 ÷ 4,5	14						
9203A/M 6/_	9203A/M 6/_Z_	0,5 ÷ 3,0	15	M 6	9	10	0,6	9	9,5
9203B/M 6/_	9203B/M 6/_Z_	3,0 ÷ 5,5	17,5						
9203A/M 8/_	9203A/M 8/_Z_	0,5 ÷ 3,5	16	M 8	11	12	0,6	11	9,5
9203B/M 8/_	9203B/M 8/_Z_	3,5 ÷ 6,0	18,5						
9203A/M 10/_	9203A/M 10/_Z_	0,5 ÷ 3,5	20	M 10	13	14,5	0,85	13	12,5
9203B/M 10/_	9203B/M 10/_Z_	3,5 ÷ 6,0	22,5						
9203A/M 12/_	9203A/M 12/_Z_	0,5 ÷ 3,5	23	M 12	15**	16,5	0,85	15	16
9203B/M 12/_	9203B/M 12/_Z_	3,5 ÷ 6,5	26						

Variable according to s dimension.

**For the version with shaft diameter 16 refer to TFM M12 pag 16

SERIES 9203 plain
MATERIAL
Steel nr. 1.0718 (on demand) _____ / ____/8
Steel nr. 1.0303 (excluding thread M12) _____ / ____/8S
Stainless steel nr. 1.4305 _____ / ____/X
Stainless steel nr. 1.4567 (excluding thread M3 and M12) _____ / ____/XS
SURFACE TREATMENT
Steel rivet nuts: white zinc plating
Stainless steel rivet nuts: natural state
THREAD TOLERANCE
Metrical tolerance ISO 6H
EXAMPLE OF CODE DESIGNATION

Threaded tubular rivet nuts with low profile head, grip thicknesses 2,0 mm, M 6 thread, stainless steel: 9203A/M 6/X

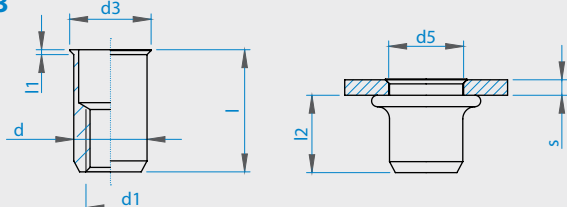
SERIES knurled
MATERIAL
Steel nr. 1.0718 _____ / ____/8Z1
Steel nr. 1.0303 (excluding thread M3, M10 and M12) _____ / ____/8ZS
Stainless steel nr. 1.4305 _____ / ____/XZ1
SURFACE TREATMENT
Steel rivet nuts: white zinc plating
Stainless steel rivet nuts: natural state
THREAD TOLERANCE
Metrical tolerance ISO 6H
EXAMPLE OF CODE DESIGNATION

Threaded tubular rivet nuts with low profile head and knurled body, grip thicknesses 2,0 mm, M 6 thread, stainless steel: 9203A/M 6/XZ1

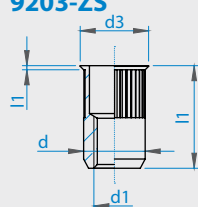
For the versions B the knurling part might be detached from the head.

Non binding dimensions, expressed in mm.

9203



9203-ZS



9203-ZI

