

**STEP 1** **PRS**

**SERIES**

Threaded stud with countersunk head and plate

**STEP 2**

Stud Length (L)

45 – 50 – 60 – 70 – 80 – 90 – 100

For stud length under 45mm, see PR data sheet

**STEP 3**

Plate type



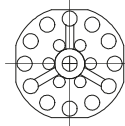
T1900=Ø19



T2000=Ø20



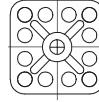
T2300=Ø23



T3800=Ø38



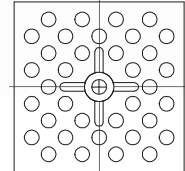
Q1515=32x32



Q3232=32x32



R3815=38x15



Q5858=58x58

**STEP 4**

Thread (M)

M5 - M6 - M8 - M10

Tolerance 6g

**STEP 5**

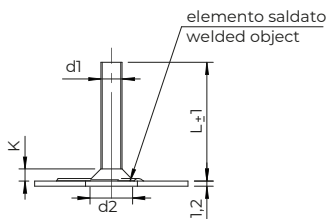
Material

Zinc Plated Steel  
316 Stainless Steel

.12  
.51

CODE	d1 Thread	d2 (max)	K	CODE	d1 Thread	d2 (max)	K
PRS_T1900050._	M 5	10	2,8	PRS_Q1515050._	M 5	10	2,8
PRS_T2000050._				PRS_Q3232050._			
PRS_T2300050._				PRS_R3815050._			
PRS_T3800050._				PRS_Q5858050._			
PRS_T1900060._	M 6	12	3,3	PRS_Q1515060._	M 6	12	3,3
PRS_T2000060._				PRS_Q3232060._			
PRS_T2300060._				PRS_R3815060._			
PRS_T3800060._				PRS_Q5858060._			
PRS_T2000080._	M 8	16	4,4	PRS_Q3232080._	M 8	16	4,4
PRS_T2300080._				PRS_Q5858080._			
PRS_T3800080._				PRS_Q3232100._			
PRS_T3800100._				PRS_Q5858100._			

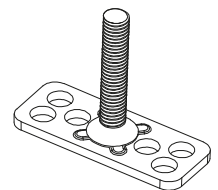
Non binding dimensions, expressed in mm.



**PRS 60 R3815 060. 12**

**STEP 1 STEP 2 STEP 3 STEP 4 STEP 5**

Example of code designation: Threaded stud with R3815 rectangular plate, M6 thread, 20mm length, zinc-plated steel



PRS60R3815060.12

WARNING: for more information regarding product availability and feasibility, please contact the tech/sales office.

**STEP 1** **PRSY**

**SERIES**

Threaded stud with countersunk head and plate with round spacers

**STEP 2** Stud Length (L)

45 - 50 - 60 - 70 - 80 - 90 - 100

For stud length under 45mm, see PRY data sheet

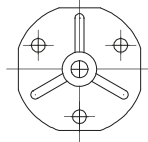
**STEP 3** Plate type



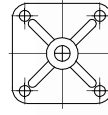
Y2000=Ø20



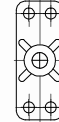
Y2300=Ø23



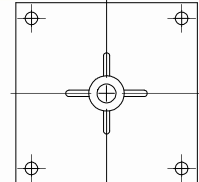
Y3800=Ø38



Y3232=32x32



Y3815=38x15



Y5858=58x58

**STEP 4** Thread (M)

M5 - M6 - M8 - M10  
Tolleranza 6g / Tolerance 6g

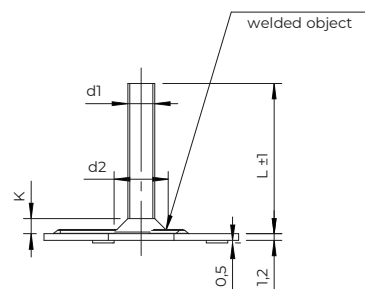
**STEP 5** Material

Zinc Plated Steel .12  
Electropolished 316 Stainless Steel .56

CODE	d1 Thread	d2 (max)	K
PRS_Y2000050._	M 5	10	2,8
PRS_Y2300050._			
PRS_Y3800050._			
PRS_Y2000060._	M 6	12	3,3
PRS_Y2300060._			
PRS_Y3800060._			
PRS_Y2000080._	M8	16	4,4
PRS_Y2300080._			
PRS_Y3800080._			
PRS_Y3800100._	M 10	20	5,5

CODE	d1 Thread	d2 (max)	K
PRS_Y3232050._	M 5	10	2,8
PRS_Y3815050._			
PRS_Y5858050._			
PRS_Y3232060._	M 6	12	3,3
PRS_Y3815060._			
PRS_Y5858060._			
PRS_Y3232080._	M8	16	4,4
PRS_Y3815080._			
PRS_Y5858100._	M 10	20	5,5

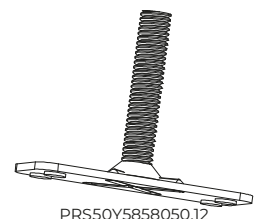
Non binding dimensions, expressed in mm.



**PRS 50 Y5858 050. 12**

**STEP 1 STEP 2 STEP 3 STEP 4 STEP 5**

Example of code designation: Threaded stud with Y3815 rectangular plate, M5 thread, 50mm length, zinc-plated steel



PRS50Y5858050.12

**NEW**

WARNING: for more information regarding product availability and feasibility, please contact the tech/sales office.