

Crown - nut SERIE ITT2S



APPLICATION

At the end of square metallic and non-metallic tubes.

ASSEMBLY

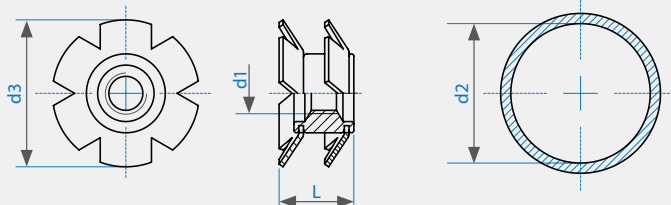
By pressure.

INSERT FOR THE INTERIOR OF ROUND TUBES

PRODUCT		CODE	Metric thread	of the tube	Crown diameter	Total length
S**	R***		(d1)	(d2*)	(d3)	(L)
●		ITT2S/M 6/11.8	M 6	11,8 - 12,2	12,8	12,5
●		ITT2S/M 6/12.6		12,6 - 13,2	13,6	10
●		ITT2S/M 6/13.2		13,2 - 13,8	14,7	12,5
●		ITT2S/M 6/13.8		13,8 ÷ 14,2	14,7	12,5
●		ITT2S/M6/15.2		15,2 - 16,1	17	10
●		ITT2S/M 6/15.7		15,7 ÷ 17,1	18,1	9,4
●		ITT2S/M 6/16.4		16,4 ÷ 17,7	18,7	9,5
●		ITT2S/M 6/17.9		17,9 ÷ 19,3	19,7	9,5
●		ITT2S/M 6/18.9		18,9 ÷ 20,2	21	9,5
●		ITT2S/M 6/19.5		19,5 ÷ 20,9	21,7	11
●		ITT2S/M 6/21.4		21,4 ÷ 22,4	23,2	10
●		ITT2S/M 6/22.1		22,1 ÷ 23,4	24,6	10
●		ITT2S/M 6/22.7		22,7 ÷ 24,0	25,4	10,5
●		ITT2S/M 6/24.6		24,6 ÷ 25,6	26,6	9,5
●		ITT2S/M 6/25.3		25,3 ÷ 26,6	27,6	10
●		ITT2S/M 6/26		26,0 ÷ 28,0	28,4	10
●		ITT2S/M 6/28.4		28,4 ÷ 29,8	30,6	11,5
●		ITT2S/M 6/29.8		29,8 - 30,8	31,8	10
●		ITT2S/M 6/31.7		31,7 ÷ 32,9	33,8	13
●		ITT2S/M8/15.2		M 8	15,2 - 16,1	17
●		ITT2S/M 8/15.7	15,7 - 17,1		18,1	12,5
●		ITT2S/M 8/16.4	16,4 ÷ 17,7		18,7	12,4
●		ITT2S/M 8/17.9	17,9 ÷ 19,3		20	13
●		ITT2S/M 8/19.5	19,5 ÷ 20,9		21,5	14,5
●		ITT2S/M 8/21.4	21,4 ÷ 22,4		23,4	13
●		ITT2S/M 8/22.7	22,7 ÷ 24,0		25,4	14
●		ITT2S/M 8/24.6	24,6 ÷ 25,6		26,5	13,3
●		ITT2S/M 8/25.3	25,3 ÷ 26,6		27,6	13,5
●		ITT2S/M 8/26.0	26,0 ÷ 28,0		28,4	13
●		ITT2S/M 8/28.4	28,4 ÷ 29,8		30,6	15
●		ITT2S/M 8/29.8	29,8 ÷ 30,8		31,8	11
●		ITT2S/M 8/31.7	31,7 ÷ 32,9		33,6	15

S** standard	R*** a richiesta on demand
------------------------	---

Non binding dimensions, expressed in mm.





PRODUCT		CODE	Metric thread	Internal dimension of the tube	Crown diameter	Total length
S**	R***		(d1)	(d2*)	(d3)	(L)
●		ITT2S/M 8/34.8	M 8	34,8 ÷ 36,1	37	16
●		ITT2S/M 8/36.0		36,0 ÷ 38,0	39	15,3
●		ITT2S/M 8/38.4		38,4 ÷ 40,4	41,3	15,5
●		ITT2S/M 8/41.4		41,4 ÷ 42,4	43,5	16,4
●		ITT2S/M 8/47.5		47,5 ÷ 48,8	50	17
●		ITT2S/M10/17.9	M10	17,9 ÷ 19,3	20,3	13
●		ITT2S/M10/18.9		18,9 ÷ 20,2	21	12,5
●		ITT2S/M10/19.5		19,5 ÷ 20,9	21,7	12,5
●		ITT2S/M10/21.4		21,4 ÷ 22,4	23,2	13,5
●		ITT2S/M10/22.1		22,1 ÷ 23,4	25	14
●		ITT2S/M10/24.6		24,6 ÷ 25,6	26,2	13,8
●		ITT2S/M10/26.0		26,0 ÷ 28,0	28,9	15
●		ITT2S/M10/28.4		28,4 - 29,8	30,7	13,5
●		ITT2S/M10/31.7		31,7 ÷ 32,9	33,8	14,3
●		ITT2S/M10/34.8		34,8 ÷ 36,1	37,3	16,5
●		ITT2S/M10/36.0		36,0 ÷ 38,0	39	15,2
●		ITT2S/M10/38.4		38,4 ÷ 40,4	41,6	16
●		ITT2S/M10/47.5		47,5 ÷ 48,8	50	17
●		ITT2S/M10/56.0		56,0 ÷ 58,0	60	16,8

S** standard	R*** on demand
------------------------	--------------------------

MATERIAL

Steel

EXAMPLE OF CODE DESIGNATION

2-crowns without flange insert for round tubes, M 6 thread, internal diameter 20,5 mm: **ITT2S/M 6/19.5**

* It is advisable to carry out some preliminary assembling tests in order to determine the best product.
After the insertion of the Crown - nut do avoid heat treatments, galvanization and other heating operations that might compromise the characteristics of the product.