

Keep-Nut[®]

SERIE IM-S METRIC

S E R I E S

PRESS IN SELF-ANCHORING THREADED INSERTS

APPLICATION

Marble, granite and stone materials, as well as on composites, carbon, Corian[®], HPL, glass and other compact materials.

ASSEMBLY

By pressure.



SERIES IM_S Flat head

CODE	Min. thicknesses	Thread	Insert lenght	Hole diameter	Hole depth	Crowns number	Average assembly press-in force*	Average pull-out strenght *	CE
	(S)**	(d1)***	(H)	(d2) + 0,2/-0,2	(l2) + 1,0/-0,0		(kN)	(kN)	
IM1S/_/_H5	8	M 4 M 5 M 6	5	12	5,5	1	0,2	0,9	✓
IM2S/_/_H6	8,5	M 4 M 5 M 6	6	12	6,5	2	0,4	2,5	✓
IM4S/_/_H8.5	11	M 4 M 5 M 6	8	12	9	4	1	3,5	✓
IM4S/_/_H15	17,5	M 6	15	12	15,5	4	1	4,2	✓

* Values reported above are indicative and not binding as results from laboratory tests that might not be repeatable in different conditions.

** "S" value is variable and related to the characteristics of the receiving material. It is recommended to perform assembly test to define the correct value.

*** Reference to be completed by thread d1.

MATERIAL

Bush: stainless steel
Crowns: stainless steel
Body: plastic

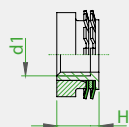
SURFACE TREATMENT

Natural state.

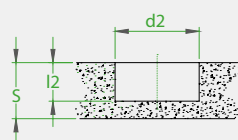
1 crown type



2 crown type

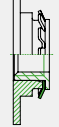


4 crown type

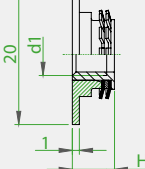


IM_S

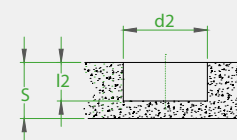
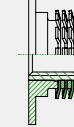
1 crown type



2 crown type



4 crown type



IM_T