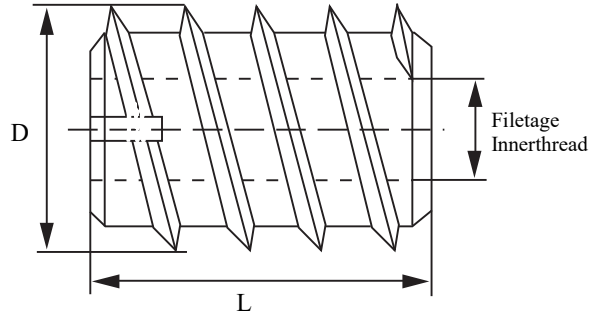
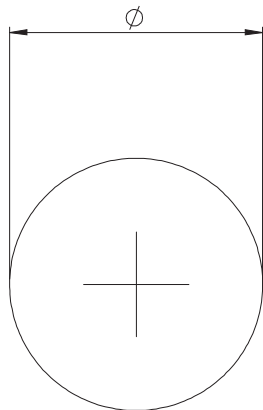




Insert à visser bois fendu sans réservoir
pour copeaux
Wood insert with slotted drive without
reservoir for wood shavings

Modèle 002
Type 002



N° d'article: Article Nr:	Filetage intérieur: Internal thread:	L:	D:	Ø trou: Hole Ø:	Matière: Material:
002 306 001	M3	6mm	6mm	5,0mm	Ac zn bl/St zn pl
002 306 01	M3	6mm	6mm	5,0mm	Laiton/brass
002 428 001	M4	8mm	6,5mm	5,5mm	Ac zn bl/St zn pl
002 438 001*	M4	8mm	6,5mm	5,5mm	Ac zn bl/St zn pl
002 429 001	M4	10mm	6,5mm	5,5mm	Ac zn bl/St zn pl
002 406 001	M4	6mm	8mm	6,0mm	Ac zn bl/St zn pl
002 408 001	M4	8mm	8mm	6,0mm	Ac zn bl/St zn pl
002 410 001	M4	10mm	8mm	6,0mm	Ac zn bl/St zn pl
002 410 03	M4	10mm	8mm	6,5-7,0mm	Inox303/Stainless st303
002 460 001*	M4	10mm	8mm	6,0mm	Ac zn bl/St zn pl
002 412 001	M4	12mm	8mm	6,0mm	Ac zn bl/St zn pl
002 509 001	M5	12mm	9mm	8,0mm	Ac zn bl/St zn pl
002 509 01	M5	12mm	9mm	8,0mm	Laiton/brass
002 508 001	M5	8mm	10mm	8,0-8,5mm	Ac zn bl/St zn pl
002 510 001	M5	10mm	10mm	8,0-8,5mm	Ac zn bl/St zn pl
002 512 001	M5	12mm	10mm	8,0-8,5mm	Ac zn bl/St zn pl
002 512 03	M5	12mm	10mm	8,0-8,5mm	Inox303/Stainless st303
002 514 001	M5	14mm	10mm	8,0-8,5mm	Ac zn bl/St zn pl
002 608 001	M6	8mm	12mm	10,0-10,5mm	Ac zn bl/St zn pl
002 610 001	M6	10mm	12mm	10,0-10,5mm	Ac zn bl/St zn pl
002 610 01	M6	10mm	12mm	10,0-10,5mm	Laiton/brass
002 611 001	M6	11mm	12mm	10,0-10,5mm	Ac zn bl/St zn pl
002 612 001	M6	12mm	12mm	10,0-10,5mm	Ac zn bl/St zn pl
002 612 03	M6	12mm	12mm	10,0-10,5mm	Laiton/brass
002 613 001	M6	13mm	12mm	10,0-10,5mm	Ac zn bl/St zn pl
002 614 001	M6	14mm	12mm	10,0-10,5mm	Ac zn bl/St zn pl
002 615 001	M6	15mm	12mm	10,0-10,5mm	Ac zn bl/St zn pl
002 618 001	M6	18mm	12mm	10,0-10,5mm	Ac zn bl/St zn pl
002 620 001	M6	20mm	12mm	10,0-10,5mm	Ac zn bl/St zn pl
002 624 001	M6	24mm	12mm	10,0-10,5mm	Ac zn bl/St zn pl



*please note: double slotted/*notez: fendu des 2 côtés

Juno Industries
Stoktevijver 22
9930 Lievegem
Belgique
www.junoindustries.fr

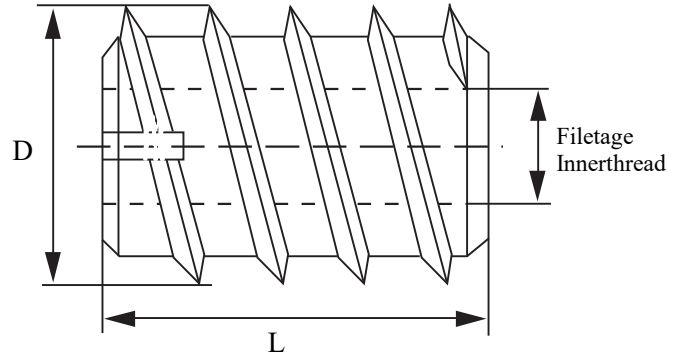
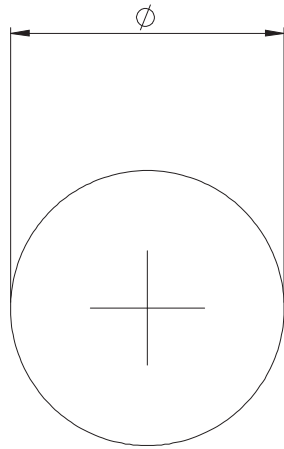
Acier zingué blanc, contient jusqu'à
0,35% de plomb
Tolérances générales DIN ISO 2768-mK
Steel zinc plating
Contains up to 0,35% lead
General tolerances acc. to DIN ISO 2768-mk

Tél France: +33-9.75.18.16.09
Tel BeNeLux: +32-9/395.95.90
Adresse mail:
co@junoindustries.fr
co@junoindustries.eu



Insert à visser bois fendu sans réservoir
pour copeaux
Wood insert with slotted drive without
reservoir for wood shavings

Modèle 002
Type 002



N° d'article: Article Nr:	Filetage intérieur: Internal thread:	L:	D:	Ø trou: Hole Ø:	Matière: Material:
002 852 001	M8	12mm	14mm	12,0-12,5mm	Ac zn bl/St zn pl
002 854 001	M8	14mm	14mm	12,0-12,5mm	Ac zn bl/St zn pl
002 855 001	M8	15mm	14mm	12,0-12,5mm	Ac zn bl/St zn pl
002 855 01	M8	15mm	14mm	12,0-12,5mm	Laiton/brass
002 855 03	M8	15mm	14mm	12,0-12,5mm	Inox303/St st303
002 858 001	M8	18mm	14mm	12,0-12,5mm	Ac zn bl/St zn pl
002 858 03	M8	18mm	14mm	12,0-12,5mm	Inox303/St st303
002 818 001	M8	18mm	16mm	13,0-13,5mm	Ac zn bl/St zn pl
002 818 03	M8	18mm	16mm	14,0-14,5mm	Inox303/St st303
002 823 001	M8	23mm	16mm	13,0-13,5mm	Ac zn bl/St zn pl
002 830 001	M8	30mm	16mm	13,0-13,5mm	Ac zn bl/St zn pl
002 839 001	M8	40mm	16mm	13,0-13,5mm	Ac zn bl/St zn pl
002 118 03	M10	18mm	16mm	14,0-14,5mm	Inox303/St st303
002 115 001	M10	15mm	18,5mm	15,5-16,0mm	Ac zn bl/St zn pl
002 115 01	M10	15mm	18,5mm	15,5-16,0mm	Laiton/brass
002 120 001	M10	20mm	18,5mm	15,5-16,0mm	Ac zn bl/St zn pl
002 125 001	M10	25mm	18,5mm	15,5-16,0mm	Ac zn bl/St zn pl
002 130 001	M10	30mm	18,5mm	15,5-16,0mm	Ac zn bl/St zn pl
002 220 001	M12	20mm	22mm	15,5-16,0mm	Ac zn bl/St zn pl
002 220 01	M12	20mm	22mm	19,0mm	Laiton/brass
002 225 03	M12	25mm	22mm	18,5-19,0mm	Inox303/St st303
002 230 001	M12	30mm	22mm	18,5-19,0mm	Ac zn bl/St zn pl
002 230 03	M12	30mm	22mm	18,5-19,0mm	Inox303/St st303
002 954 001	M14	25mm	22mm	19,0mm	Ac zn bl/St zn pl
002 651 03	M16	25mm	25mm	21,0-21,5mm	Inox303/St st303



Juno Industries
Stoktevijver 22
9930 Lievegem
Belgique
www.junoindustries.fr

Acier zingué blanc, contient jusqu'à
0,35% de plomb
Tolérances générales DIN ISO 2768-mK
Steel zinc plating
Contains up to 0,35% lead
General tolerances acc. to DIN ISO 2768-mk

Tél France: +33-9.75.18.16.09
Tel BeNeLux: +32-9/395.95.90
Adresse mail:
co@junoindustries.fr
co@junoindustries.eu